

United States Department of the Interior
National Park Service419
FEB 07 1990National Register of Historic Places
Registration Form

This form is for use in nominating or requesting determinations of eligibility for individual properties or districts. See instructions in *Guidelines for Completing National Register Forms* (National Register Bulletin 16). Complete each item by marking "x" in the appropriate box or by entering the requested information. If an item does not apply to the property being documented, enter "N/A" for "not applicable." For functions, styles, materials, and areas of significance, enter only the categories and subcategories listed in the instructions. For additional space use continuation sheets (Form 10-900a). Type all entries.

1. Name of Property

historic name Waterford Borough Historic District
other names/site number N/A

2. Location

street & number High Street, Walnut Street, First - Third Streets N/A not for publication
city, town Waterford N/A vicinity
state Pennsylvania code PA county Erie code 049 zip code 16441

3. Classification

Ownership of Property

- ☒ private
☐ public-local
☐ public-State
☐ public-Federal

Category of Property

- ☐ building(s)
☒ district
☐ site
☐ structure
☐ object

Number of Resources within Property

Contributing	Noncontributing
<u>42</u>	<u>12</u> buildings
	<u> </u> sites
	<u> </u> structures
	<u> </u> objects
<u>42</u>	<u>12</u> Total

Name of related multiple property listing:
N/A

Number of contributing resources previously
listed in the National Register 1

4. State/Federal Agency Certification

As the designated authority under the National Historic Preservation Act of 1966, as amended, I hereby certify that this
☒ nomination ☐ request for determination of eligibility meets the documentation standards for registering properties in the
National Register of Historic Places and meets the procedural and professional requirements set forth in 36 CFR Part 60.
In my opinion, the property ☒ meets ☐ does not meet the National Register criteria. ☐ See continuation sheet.

Dr. Brent D. Glass

Signature of certifying official

1-31-90

Date

Pennsylvania Historical and Museum Commission

State or Federal agency and bureau

In my opinion, the property ☐ meets ☐ does not meet the National Register criteria. ☐ See continuation sheet.

Signature of commenting or other official

Date

State or Federal agency and bureau

5. National Park Service Certification

I, hereby, certify that this property is:

- ☒ entered in the National Register.
☐ See continuation sheet.
☐ determined eligible for the National
Register. ☐ See continuation sheet.
☐ determined not eligible for the
National Register.
☐ removed from the National Register.
☐ other, (explain:)

Mark J. Baker
Entered in the
National Register

9 March 1990

fr
Signature of the Keeper

Date of Action

6. Function or Use

Historic Functions (enter categories from instructions)

Commerce/Department Store

Commerce/Specialty Store

Domestic/Single Dwelling

Current Functions (enter categories from instructions)

Commerce/Department Store

Commerce/Specialty Store

Domestic/Single Dwelling

7. Description

Architectural Classification

(enter categories from instructions)

Federal

Greek Revival

Italianate

Materials (enter categories from instructions)

foundation Stone

walls Brick

Wood

roof Asphalt

other

Describe present and historic physical appearance.

The Waterford Borough Historic District is located approximately twenty miles south of the City of Erie and provides examples of commercial and residential buildings constructed between 1820 and 1939. The building styles represented in the Waterford District include Federal, Greek Revival, Georgian, Italianate, Victorian and Vernacular. The buildings range from two to three stories with the common building materials being brick and frame, though stone and concrete block are extant. The integrity of these buildings is good to excellent.

The town of Waterford is laid out on a flat plain with rolling hills in all directions. The streets are arranged on a grid pattern with High Street, the main commercial strip, running north-south through the center of town. Generally, the district includes the commercial buildings along High Street and the residential buildings located on First, Second, Third and Walnut Streets to the west of High Street. The boundaries exclude those properties to the north of the town square which include a gas station, a car dealership, and other historic properties which have been substantially altered by remodeling and additions. The district boundaries include those properties facing High Street, between South Park Row and the Judson House, and the Eagle Hotel to the south. This southern boundary excludes the c. 1970 Fort LeBoeuf Museum and the vacant properties further south. The western boundary encompasses the residential properties on Second, Third and Walnut Streets. The boundaries exclude those residential properties which have been substantially remodeled and those buildings constructed after the period of significance.

The town square, located at High Street and South Park Row, has also been included in the district. The square is comprised of two blocks covered with grass and shade trees with a bandstand located at the center of one of these blocks. To the east of the square is the 1832 St. Peter's Episcopal Church constructed of stone in a Gothic inspired style. To the west is the c. 1850 Greek Revival Presbyterian Church. Both of these churches are included in the district.

In all, the district includes 42 contributing buildings and 12 non-contributing buildings. Of the former, 25 are commercial, 13 are residential, and 3 are religious. The non-contributing buildings include 7 residential and 4 commercial buildings and one bandstand.

The commercial buildings along High Street are predominately late 19th Century Italianate row buildings such as 120-126 High Street, which are typical of these

☒ See continuation sheet

8. Statement of Significance

Certifying official has considered the significance of this property in relation to other properties:

☐ nationally ☐ statewide ☒ locally

Applicable National Register Criteria ☒ A ☐ B ☒ C ☐ D

Criteria Considerations (Exceptions) ☐ A ☐ B ☐ C ☐ D ☐ E ☐ F ☐ G

Areas of Significance (enter categories from instructions)

Architecture

Commerce

Period of Significance

1820-1939

Significant Dates

N/A

Cultural Affiliation

N/A

Significant Person

N/A

Architect/Builder

Various

State significance of property, and justify criteria, criteria considerations, and areas and periods of significance noted above.

The Waterford Historic District is historically significant in the area of commerce for its growth and sustenance as a local service center. In the early decades of the 19th Century, Waterford began servicing local farmers and travelers along the Waterford Turnpike. After the town was by-passed by the canals and the railroads at mid-century, it continued to be a service center for local farmers through the early twentieth Century. The Waterford Historic District has architectural significance as an intact concentration of nineteenth and early twentieth century high style architecture in Erie County.

In 1794, government surveyors Andrew Ellicott and William Irvine completed a town plan for the site at Fort LeBoeuf along LeBoeuf Creek in Waterford Township. The town was given the name "Waterford." A year later, Ellicott and Irvine completed plans for the town of Erie twenty miles north of Waterford. Both plans were based on William Penn's popular gridiron plan with town squares at the intersection of major streets. The main north-south street in Waterford was named "High Street" and the main east-west street was named "Third Street."

The next thirty years saw the transformation of Waterford from a military outpost to a thriving frontier settlement as it was opened to trade by land and by water. In 1809, the Erie and Waterford Turnpike was completed to Waterford. The road began in Erie and connected with High Street in Waterford, and would eventually provide a thoroughfare from Erie to Philadelphia by way of the French Creek, the Juniata, and the Susquehanna Valleys. Waterford also became a principal port of entry for products and supplies destined to the Ohio River by way of LeBoeuf Creek, French Creek and the Allegheny River. Salt trade along the LeBoeuf Creek and beyond was very lucrative and attracted Waterford's early settlers.

Early commercial development occurred along Water Street near the creek, but when river traffic and trade began to decrease in the early 1820's, merchantile and service businesses began to open along High Street where business was steady along the Waterford Turnpike. Judson's Store and the Eagle Hotel (National Register, 1977) were two of the earliest commercial endeavors to open along High Street. Constructed in 1820 and 1826 respectfully, these surviving buildings represent the

☒ See continuation sheet

9. Major Bibliographical References

F. W. Beers, Atlas of Erie County, Pennsylvania, F. W. Beers, A. D. Ellis & G. G. Soule, N.Y., 1865, Page 9

Combination Atlas Map of Erie County, Pennsylvania, Everts, Ensign & Everts, Philadelphia, 1876, Page 123

Erie County Council, Erie County, Tax Records (Microfilm), 1823-1834 (Held by Erie County Historical Society)

Erie County Directory, The Dispatch Printing Company, Erie, 1866

Gazetter and Business Directory of Erie County, Pennsylvania for 1871-1874, Hamilton Child, N.Y., Pages 244-251

☒ See continuation sheet

Previous documentation on file (NPS):

- ☐ preliminary determination of individual listing (36 CFR 67) has been requested
- ☐ previously listed in the National Register
- ☐ previously determined eligible by the National Register
- ☐ designated a National Historic Landmark
- ☐ recorded by Historic American Buildings Survey # _____
- ☐ recorded by Historic American Engineering Record # _____

Primary location of additional data:

- ☒ State historic preservation office
- ☐ Other State agency
- ☐ Federal agency
- ☐ Local government
- ☐ University
- ☐ Other

Specify repository: _____

10. Geographical Data

Acreage of property 21

UTM References

A 1 7 5 8 3 9 2 0 4 6 4 3 6 3 0
Zone Easting Northing

C 1 7 5 8 4 3 3 0 4 6 4 3 4 2 0

B 1 7 5 8 4 3 2 0 4 6 4 3 7 9 0
Zone Easting Northing

D 1 7 5 8 4 1 0 5 4 6 4 3 3 6 0

☐ See continuation sheet

Verbal Boundary Description

The boundaries of the Waterford Borough Historic District are shown as a solid black line on the accompanying map entitled "Waterford Historic District."

☐ See continuation sheet

Boundary Justification

The boundaries of the Waterford Borough Historic District include those buildings contributing to the historical and architectural significance of Waterford. Generally, the district includes the commercial buildings along High Street and the residential buildings to the west. The northern boundary follows the outline of the town square

☒ See continuation sheet

11. Form Prepared By

name/title Patricia A. Sands, Historic Consultant / William Sisson

organization N/A/PHMC date August 1, 1989

street & number 204 Carpenter Lane / Box 1026 telephone (412) 734-5765 / (717) 783

city or town Pittsburgh / Harrisburg state PA zip code 15212 /

**United States Department of the Interior
National Park Service****National Register of Historic Places
Continuation Sheet**

Waterford Borough Historic District

Section number 7 Page 2

ROWS in scale, material and integrity. These two story brick buildings are constructed on adjoining lots and share common party walls. The buildings have first story storefronts, simple windows and detailing at the second story, and a contiguous Italianate Style cornice along the flat roofs. Although the original storefronts have been replaced with contemporary aluminum storefronts, all other detailings are original, therefore, the integrity of the buildings is good.

Other commercial buildings along High Street pre-date the post 1890 Italianate row buildings, although their scale and integrity are generally consistent with the row buildings. These Federal and Greek Revival commercial buildings are of stone, frame or brick construction. Typical of these buildings are the Eagle Hotel and 117 High Street. The 1820 Eagle Hotel, located on High and First Streets, features stone construction in the Federal Style with stepped gable ends. The building at 117 High Street is a 2½ story frame Greek Revival building constructed in c. 1840.

There are four non-contributing commercial buildings in the district that were built between 1950 and 1980. They are all one story brick or frame buildings of which two are located between First and Second Streets on the east side of High Street. The c. 1960 brick telephone company is set back off of South Park Row.

The residential buildings in the Waterford District were constructed between 1820 and 1939 and their styles include Federal, Greek Revival, Georgian, Italianate, Vernacular and Victorian. These residences are generally two stories, are constructed of frame or brick and exhibit simple, but distinctive, detailing. Their integrity ranges from good to excellent.

The Federal, Greek Revival, Georgian, and Vernacular homes represent the earliest period of residential construction in Waterford which occurred between 1820 and 1850. The Federal Style homes are modest, frame buildings with minimal detail, such as the Judson House at the corner of High and First Streets and 218 Walnut Street. Representative of Greek Revival homes is the dwelling at 102 High Street, which has a pediment roof capping a two story, rectangular main section, pilasters accenting the corners of this section, and pedimented portico over the main entrance. A plain, one and one half story wing is attached to one side of the main section. The two Georgian residences are more substantial buildings with distinctive detailing such as the two story portico at 124 West Third Street and the stepped gable ends at 104 Walnut Street. The vernacular residence at 101 West Second Street is a simple L-shaped frame residence without ornamentation and typical of area vernacular homes. Other vernacular residences, such as 130 West Third Street, are representative of later vernacular construction.

There are two Italianate residences representative of residential construction between 1860 and 1880. The home at 214 Walnut Street is a large frame Italianate residence with a bracketed cornice and cupola. This home was constructed in c. 1860. The 1872 residence at 12 East Second Street is a small brick home with

**United States Department of the Interior
National Park Service**

**National Register of Historic Places
Continuation Sheet**

Waterford Borough Historic District

Section number 7 Page 3

decorative Italianate window and cornice detailing.

The sole concrete block residence within the district, 29 South Park Row, represents the last period of residential construction after 1900. This home was constructed c. 1915 and is typical of other period residences in the town of Waterford.

There are 7 non-contributing residences in the Waterford District. The majority of these residences are post 1950 suburban ranch or block homes, such as 127 and 135 West Third Street. Other residences, like 28 West Second and 105 Walnut Streets, have been remodeled for commercial use. The remodeling has stripped these buildings of any original distinguishing detailing.

The majority of the residences retain a high degree of integrity because they have remained single family residences and have been maintained without alterations. Some of the frame vernacular homes have been covered with aluminum siding and have had aluminum windows installed to replace the original wood windows.

Although the town of Waterford has other homes of historic and architectural importance, as identified by the Erie County Survey, they do not represent a contiguous area. They are scattered among homes which have suffered unsympathetic remodelings and have virtually lost all distinguishing characteristics. The homes that have been selected for inclusion in the district are a sample of the typical styles within the town of Waterford.

**United States Department of the Interior
National Park Service****National Register of Historic Places
Continuation Sheet**

Waterford Borough Historic District

Section number 8 Page 2

start of Waterford as a local service center. On the southeast corner of High and First Streets, Amos Judson constructed a two story house with a store attached to the south. He opened a barter and trade facility where anything from hides to building materials, dried fruits, farm products and wool, could be obtained or exchanged. The frame Federal Style building survives in excellent condition and is used as a local history library and museum.

Six years later Thomas King, the son of one of Waterford's early settlers, opened the Eagle Hotel and livery stable. King hired Ebenezer Evans, a master builder, to complete the stone work on the inn and livery stable. The inn was one of few stone buildings in Western Pennsylvania and it became a welcome sight to weary frontier travelers. The Eagle Hotel boasts a rich history as a social hall, a resort, and a popular stop for salesmen who would reside in the hotel, rent a horse and rig from the livery, and conduct their business in the area. The original livery stable was destroyed by fire in 1845, but the main building was restored in 1977 and operates as a restaurant.

Through this early period of commercial development in Waterford, the religious component of frontier village life in Waterford was confined to the old warehouses along the creek or the schoolhouses in town. This changed with the construction of St. Peter's Episcopal Church in 1832 to the east of the town square and the construction of the Presbyterian Church, two years later, to the west of the town square. The two churches face each other across the square.

Waterford's service-oriented businesses were concentrated along High Street between the town square and First Street to the south. The three story brick building at 102 High Street was built in the mid-1830's by Peter F. Judson, a dealer in dry goods and groceries. The two story frame Greek Revival building at 117 High Street was constructed in the mid-1840's and, although remodeled, it remains as the only frame commercial structure along this street. The building at 201 High Street was also constructed in the mid-1840's and was used as Carson and Maxwell's Dry Goods Store. By the turn-of-the-century, this building housed both the post office and the headquarters for the Masonic Temple. These buildings survive today as reminders of mid-century Waterford.

In the 1840's and 1850's, the State of Pennsylvania expanded transportation capacity with the construction of canals and railroads across the state. For many frontier villages in northwestern Pennsylvania, these transportation improvements meant the possibility of attracting new industry and the chance to open their isolated hinterland markets to the larger markets of the cities. Waterford was not successful in attracting either the canal or the railroad. The Beaver and Lake Erie Canal continued up French Creek into Erie, and the Philadelphia and Erie Railroad located its depot one mile outside of Waterford. The town could not attract new

Continued...

**United States Department of the Interior
National Park Service****National Register of Historic Places
Continuation Sheet**

Waterford Borough Historic District

Section number 8 Page 3

industries without the incentive of improved transportation capacity, but it continued as a vital service center for the surrounding area.

In 1860, the population of Waterford peaked at 900. The majority of the residents were native-born Americans who came to Waterford from New York, Connecticut or Vermont. Although early residential development occurred along the creek, by the 1860's most of these early residences had disappeared and homes were being constructed to the north of First Street and to the east and west of High Street. Waterford was a modest town, but its residents were well-to-do having succeeded in farming, local business, or local professional practice. This is reflected in the residences of Dr. William Judson (c. 1845) at First and Walnut Streets, and the E. B. Sleeper House at 124 West Third Street (c. 1854) within the district. These homes are unique to Waterford because of their Georgian Style. The more typical Waterford residences are represented by the c. 1865 frame Federal Style residences of Dr. William Faulkner at 146 West Second Street, Dr. I. Barton's residence at 218 Walnut Street, and the vernacular residence of William Boyd at 101 West Second Street. The homes which survive within the district retain a high degree of integrity and are representative of the homes in Waterford constructed between 1840 and 1900.

The commercial district on High Street in 1860 was lined with two and three story frame commercial buildings. Everything from dry goods to clothing, and from hardware to paints and pharmaceuticals, was available in Waterford. In 1865, the Waterford Hotel was constructed on the southwest corner of Third and High Streets and joined the ranks of businesses servicing the region. The same year, Waterford experienced its first in a series of fires which would eventually destroy all but one of the original frame commercial buildings (117 High Street). Additional fires occurred in 1873, 1881, 1883 and a major fire in 1895 destroyed the majority of buildings along the west side of High Street. Most of the fires were suspicious and they permanently altered the appearance of the commercial district.

Following the fire of 1895, the town council of Waterford passed an ordinance prohibiting the construction of frame buildings on High Street. By August of 1895, Waterford's commercial center was well under reconstruction. At 208 High Street, H. P. Gillett constructed a two story brick building for his grocery business known as Stone and Gillett. Although the partnership dissolved in 1901, the business continued for many years. Another grocer, T. W. Whitney, constructed a new two story building for his business at 128 High Street. Davis and Patton opened at M. A. Patton's new building at 130 High Street. They sold medicines, stationary and hardware. J. L. McKay and Son reopened their dry goods business in their new building at 120 High Street. In 1898, F. W. Ensworth opened his bank in a new two story brick building at 110-112 High Street. Around the same time, the I.O.O.F.

Continued...

**United States Department of the Interior
National Park Service**

**National Register of Historic Places
Continuation Sheet**

Waterford Historic District

Section number 8 Page 4

purchased the burnt property of T.W. Barton and W.L. Kelly at 216 High Street where they had operated a drug store and an Opera House. In 1905, the Odd Fellows began and completed construction on their building. In 1915, the property at 108 High Street became Burns Auto Garage with apartments on the upper floors. These various businesses continued supplying Waterford's residents and area farmers up to 1939, the end of the period of significance. Since 1939, the businesses operating along High Street have changed to accommodate contemporary needs, but they have remained local service oriented operations. The commercial district has changed very little except for the construction of a new, privately owned building that serves as the post office and a new bank on the east side of High Street.

The Waterford Historic District is architecturally significant as an intact concentration of high-style, nineteenth and early twentieth century architecture in Erie County. As confirmed by a comprehensive historic sites survey of Erie County, Waterford offers one of the best concentrations of nineteenth and early twentieth century architectural styles in the county.

**United States Department of the Interior
National Park Service**

**National Register of Historic Places
Continuation Sheet**

Waterford Borough Historic District

Section number 9 Page 2

Historical Reference Book of Erie County, Pennsylvania, S. B. Nelson, Erie, 1896,
Vol. 1, Pages 372-378, Vol. 2, Pages 585, 676

J. J. Lints, Erie County General Directory, 1856-60, Pages 162-165

John E. Reed, History of Erie County, Pennsylvania, Warner, Beers & Company, 1884

A Twentieth Century History of Erie County, Pennsylvania, John Miller, Chicago, —
1909

Jack Walter, "The Old Judson House", Erie Sunday Times, October 1, 1950

Edward Wishart, "Waterford 80 Years Ago", The Waterford Leader, June 19, 1958

Edward Wishart, "Waterford's History & Development", personal collection and
clippings file, Volumes 1-10, held at Erie County Historical Society

Erie County Department of Planning, Data Analysis Reports, August 1986 and June 1987

**United States Department of the Interior
National Park Service**

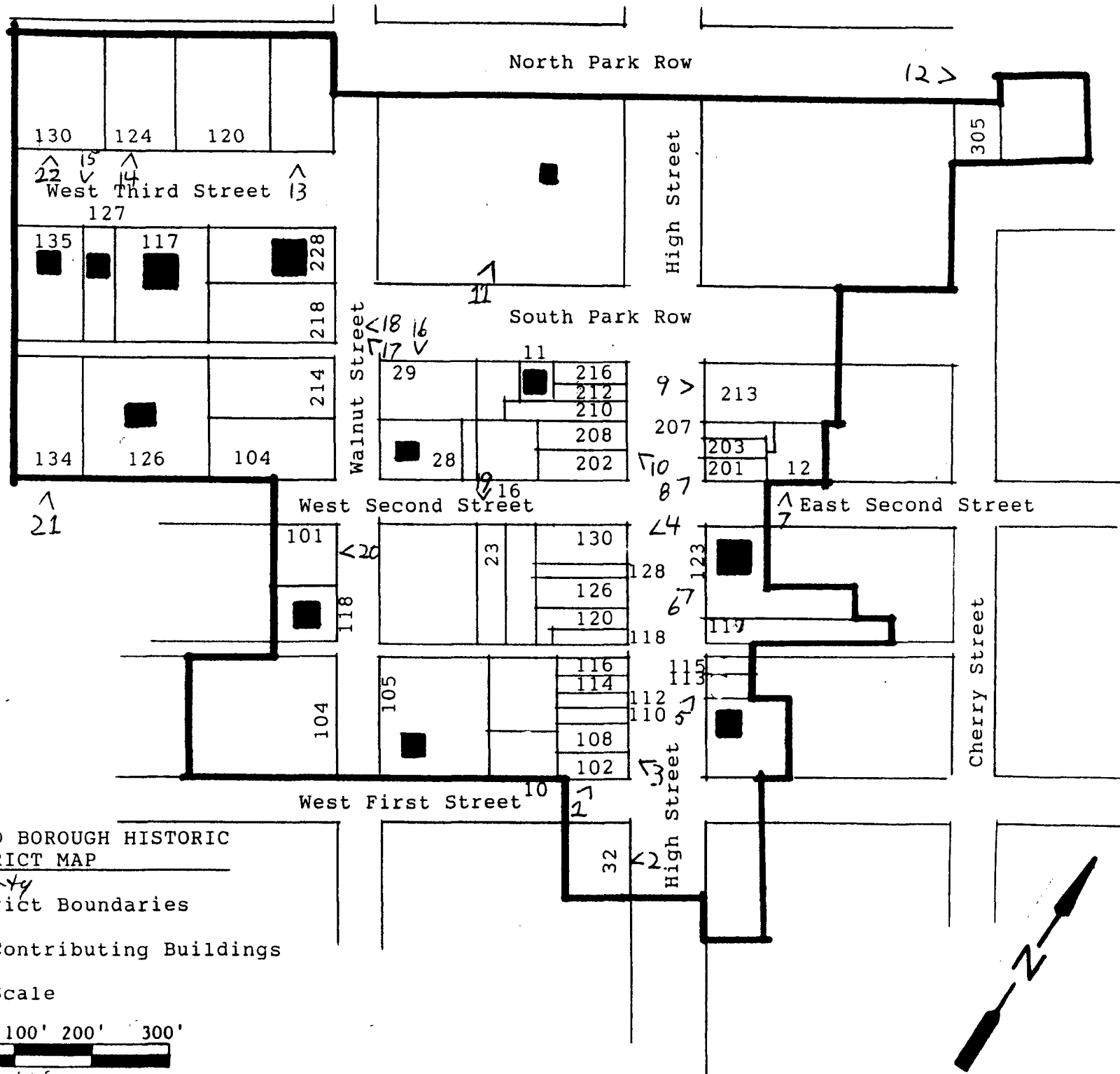
**National Register of Historic Places
Continuation Sheet**

Waterford Borough Historic District

Section number 10 Page 2

and encompasses the churches which flank the square to the east and west. The eastern boundary is the rear property line of those properties which face High Street. The southern boundary includes the Judson House and the Eagle Hotel at the south end of High Street. The western boundary encompasses those residences to the west on First, Second, Third and Walnut Streets.

The boundaries exclude those properties to the north of the town square which include a gas station, a car dealership and other properties which have been substantially altered. To the south, the boundaries exclude the c. 1970 Fort LeBoeuf Museum and multiple vacant properties further south. The east and west boundaries exclude those residential properties which have been substantially altered or that were constructed after 1939.



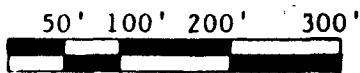
WATERFORD BOROUGH HISTORIC DISTRICT MAP

Erie County

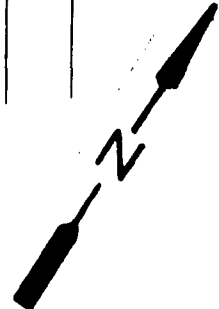
District Boundaries

Non-Contributing Buildings

Map Scale



> photo Views



WATERFORD BOROUGH HISTORIC DISTRICT, ERIE COUNTY

ADDRESS: 117 West Third Street

HISTORIC NAME: None

HISTORIC/PRESENT FUNCTION: Single Family Residence/Same

DESCRIPTION: This is a 2 story frame structure in a vernacular style.

DATE: c. 1940

ASSOCIATED BUILDINGS: None

COUNT IN INVENTORY: 1 Non-contributing

ADDRESS: 120-122 West Third Street

HISTORIC NAME: None

HISTORIC/PRESENT FUNCTION: Single Family/Church-related Residence

DESCRIPTION: This is a 2 story, 3 bay, frame structure in the Queen Anne Style.

DATE: c. 1880

ASSOCIATED BUILDINGS: None

COUNT IN INVENTORY: 1 Contributing

ADDRESS: West Third and Walnut Streets

HISTORIC NAME: First Park Presbyterian Church

HISTORIC/PRESENT FUNCTION: Religious/Same

DESCRIPTION: This is a 2 story, 3 bay, brick structure in the Greek Revival Style.

DATE: 1834

ASSOCIATED BUILDINGS: None

COUNT IN INVENTORY: 1 Contributing

ADDRESS: 124 West Third Street

HISTORIC NAME: E.B. Sleeper House

HISTORIC/PRESENT FUNCTION: Single Family Residence/Same

DESCRIPTION: This is a 2-1/2 story, 5 bay, brick structure with a cupola in the Georgian Style.

DATE: 1854

ASSOCIATED BUILDINGS: None

COUNT IN INVENTORY: 1 Contributing

ADDRESS: 127 West Third Street

HISTORIC NAME: None

HISTORIC/PRESENT FUNCTION: Single Family Residence/Same

DESCRIPTION: This is a 1 story, frame vernacular residence.

DATE: c. 1950

ASSOCIATED BUILDINGS: None

COUNT IN INVENTORY: 1 Non-contributing

WATERFORD BOROUGH HISTORIC DISTRICT, ERIE COUNTY

ADDRESS: 117 West Third Street
HISTORIC NAME: None
HISTORIC/PRESENT FUNCTION: Single Family Residence/Same
DESCRIPTION: This is a 2 story frame structure in a vernacular style.
DATE: c. 1940
ASSOCIATED BUILDINGS: None
COUNT IN INVENTORY: 1 Non-contributing

ADDRESS: 120-122 West Third Street
HISTORIC NAME: None
HISTORIC/PRESENT FUNCTION: Single Family/Church-related Residence
DESCRIPTION: This is a 2 story, 3 bay, frame structure in the Queen Anne Style.
DATE: c. 1880
ASSOCIATED BUILDINGS: None
COUNT IN INVENTORY: 1 Contributing

ADDRESS: West Third and Walnut Streets
HISTORIC NAME: First Park Presbyterian Church
HISTORIC/PRESENT FUNCTION: Religious/Same
DESCRIPTION: This is a 2 story, 3 bay, brick structure in the Greek Revival Style.
DATE: 1834
ASSOCIATED BUILDINGS: None
COUNT IN INVENTORY: 1 Contributing

ADDRESS: 124 West Third Street
HISTORIC NAME: E.B. Sleeper House
HISTORIC/PRESENT FUNCTION: Single Family Residence/Same
DESCRIPTION: This is a 2-1/2 story, 5 bay, brick structure with a cupola in the Georgian Style.
DATE: 1854
ASSOCIATED BUILDINGS: None
COUNT IN INVENTORY: 1 Contributing

ADDRESS: 127 West Third Street
HISTORIC NAME: None
HISTORIC/PRESENT FUNCTION: Single Family Residence/Same
DESCRIPTION: This is a 1 story, frame vernacular residence.
DATE: c. 1950
ASSOCIATED BUILDINGS: None
COUNT IN INVENTORY: 1 Non-contributing

WATERFORD BOROUGH HISTORIC DISTRICT, ERIE COUNTY PAGE 2

ADDRESS: 130 West Third Street
HISTORIC NAME: None
HISTORIC/PRESENT FUNCTION: Single Family Residence/Same
DESCRIPTION: This is a 2 story, 3 bay, frame structure in the
Victorian Style.
DATE: c. 1880
ASSOCIATED BUILDINGS: None
COUNT IN INVENTORY: 1 Contributing

ADDRESS: 135 West Third Street
HISTORIC NAME: None
HISTORIC/PRESENT FUNCTION: Single Family Residence/Same
DESCRIPTION: This is a 1 story, frame vernacular residence.
DATE: c. 1950
ASSOCIATED BUILDINGS: None
COUNT IN INVENTORY: 1 Non-contributing

ADDRESS: 104 Walnut Street
HISTORIC NAME: Dr. William Judson House
HISTORIC/PRESENT FUNCTION: Single Family Residence/Same
DESCRIPTION: This is a 2 story, 6 bay, brick structure in the
Georgian Style.
DATE: 1845
ASSOCIATED BUILDINGS: None
COUNT IN INVENTORY: 1 Contributing

ADDRESS: 105 Walnut Street
HISTORIC NAME: None
HISTORIC/PRESENT FUNCTION: Single Family Residence/Funerary
DESCRIPTION: This is a 2 story, concrete block structure with
multiple additions.
DATE: c. 1920
ASSOCIATED BUILDINGS: None
COUNT IN INVENTORY: 1 Non-contributing

ADDRESS: 118 Walnut Street
HISTORIC NAME: None
HISTORIC/PRESENT FUNCTION: Single Family Residence/Same
DESCRIPTION: This is a 1 story frame vernacular residence.
DATE: c. 1940
ASSOCIATED BUILDINGS: None
COUNT IN INVENTORY: 1 Non-contributing

ADDRESS: 214 Walnut Street
HISTORIC NAME: None
HISTORIC/PRESENT FUNCTION: Single Family Residence/Same
DESCRIPTION: This is a 2 story frame italianate structure with
a cupola.
DATE: c. 1870
ASSOCIATED BUILDINGS: None
COUNT IN INVENTORY: 1 Contributing

ADDRESS: 218 Walnut Street
HISTORIC NAME: Dr. I. Barton House
HISTORIC/PRESENT FUNCTION: Single Family Residence/Same
DESCRIPTION: This is a 2 story, 3 bay, frame structure in the Federal Style. A barn survives to the rear.
DATE: c. 1865
ASSOCIATED BUILDINGS: Barn
COUNT IN INVENTORY: 1 Contributing

ADDRESS: 228 Walnut Street
HISTORIC NAME: None
HISTORIC/PRESENT FUNCTION: Single Family Residence/Same
DESCRIPTION: This is a 2 story, 3 bay, frame vernacular style residence.
DATE: c. 1940
ASSOCIATED BUILDINGS: None
COUNT IN INVENTORY: 1 Non-contributing

ADDRESS: 29 West South Park Row
HISTORIC NAME: None
HISTORIC/PRESENT FUNCTION: Single Family House/Same
DESCRIPTION: This is a 2-1/2 story concrete block residence.
DATE: c. 1920
ASSOCIATED BUILDINGS: None
COUNT IN INVENTORY: 1 Contributing

ADDRESS: 11 West South Park Row
HISTORIC NAME: None
HISTORIC/PRESENT FUNCTION: Communication Facility
DESCRIPTION: This is a one story brick structure.
DATE: c. 1960
ASSOCIATED BUILDINGS: None
COUNT IN INVENTORY: 1 Non-contributing

ADDRESS: 305 Cherry Street
HISTORIC NAME: St. Peter's Episcopal Church
HISTORIC/PRESENT FUNCTION: Religious/Same
DESCRIPTION: This is a 2 story, 3 bay, brick church with Gothic Style influence.
DATE: 1832
ASSOCIATED BUILDINGS: None
COUNT IN INVENTORY: 1 Contributing

ADDRESS: East First and High Streets (SE Corner)
HISTORIC NAME: Amos Judson House
HISTORIC/PRESENT FUNCTION: Residential & Commercial/Museum
DESCRIPTION: This is a 2 story, frame structure in the Federal Style.
DATE: 1820
ASSOCIATED BUILDINGS: None
COUNT IN INVENTORY: 1 Contributing

ADDRESS: 32 High Street
HISTORIC NAME: Eagle Hotel
HISTORIC/PRESENT FUNCTION: Inn/Restaurant
DESCRIPTION: This is a 2 story, stone structure with stepped
gable ends in the Federal and Georgian Styles.
DATE: 1826
ASSOCIATED BUILDINGS: None
COUNT IN INVENTORY: 1 Contributing

ADDRESS: 102 High Street
HISTORIC NAME: Peter P. Judson Store
HISTORIC/PRESENT FUNCTION: Commercial/Same
DESCRIPTION: This is a 3 story, 3 bay, brick structure in the
Italianate Style.
DATE: c. 1830
ASSOCIATED BUILDINGS: None
COUNT IN INVENTORY: 1 Contributing

ADDRESS: 108 High Street
HISTORIC NAME: None
HISTORIC/PRESENT FUNCTION: Commercial/Same
DESCRIPTION: This is a 2 story, 3 bay, brick vernacular
commercial structure.
DATE: 1915
ASSOCIATED BUILDINGS: None
COUNT IN INVENTORY: 1 Contributing

ADDRESS: East First and High Streets (NE Corner)
HISTORIC NAME: None
HISTORIC/PRESENT FUNCTION: Post Office
DESCRIPTION: This is a 1 story brick commercial structure.
DATE: c. 1960
ASSOCIATED BUILDINGS: None
COUNT IN INVENTORY: 1 Non-contributing

ADDRESS: 110-112 High Street
HISTORIC NAME: Ensworth Bank
HISTORIC/PRESENT FUNCTION: Commercial/Same
DESCRIPTION: This is a 2 story, 4 bay, brick structure with 2
storefronts in a victorian commercial style.
DATE: c. 1895
ASSOCIATED BUILDINGS: None
COUNT IN INVENTORY: 1 Contributing

WATERFORD BOROUGH HISTORIC DISTRICT, ERIE COUNTY PAGE 5

ADDRESS: 113-115 High Street

HISTORIC NAME: None

HISTORIC/PRESENT FUNCTION: Commercial/Same

DESCRIPTION: This is a 1 story frame structure with 3 storefronts with separate owners.

DATE: c. 1930

ASSOCIATED BUILDINGS: None

COUNT IN INVENTORY: 2 contributing

ADDRESS: 114 High Street

HISTORIC NAME: None

HISTORIC/PRESENT FUNCTION: Commercial/Same

DESCRIPTION: This is a 2 story, 2 bay, brick structure with a storefront in a victorian commercial style.

DATE: c. 1895

ASSOCIATED BUILDINGS: c. 1895

COUNT IN INVENTORY: 1 Contributing

ADDRESS: 116 High Street

HISTORIC NAME: None

HISTORIC/PRESENT FUNCTION: Commercial/Same

DESCRIPTION: This is a 2 story, 2 bay, brick building with a storefront in a Victorian commercial style.

DATE: c. 1895

ASSOCIATED BUILDINGS: None

COUNT IN INVENTORY: 1 Contributing

ADDRESS: 118 High Street

HISTORIC NAME: McKay Block

HISTORIC/PRESENT FUNCTION: Commercial/Same

DESCRIPTION: This is a 2 story, 2 bay, brick structure with a storefront in a victorian commercial style.

DATE: c. 1895

ASSOCIATED BUILDINGS: None

COUNT IN INVENTORY: 1 Contributing

ADDRESS: 117 High Street

HISTORIC NAME: E.B. Gray

HISTORIC/PRESENT FUNCTION: Commercial/Same

DESCRIPTION: This is a 2-1/2 story, 3 bay, frame structure in the Greek Revival Style.

DATE: c. 1840

ASSOCIATED BUILDINGS: None

COUNT IN INVENTORY: 1 Contributing

ADDRESS: 123 High Street

HISTORIC NAME: None

HISTORIC/PRESENT FUNCTION: Commercial/Same

DESCRIPTION: This is a 1 story brick commercial bank building.

DATE: c. 1970

ASSOCIATED BUILDINGS: None

COUNT IN INVENTORY: 1 Non-contributing

WATERFORD BOROUGH HISTORIC DISTRICT, ERIE COUNTY PAGE 6

ADDRESS: 120 High Street
HISTORIC NAME: None
HISTORIC/PRESENT FUNCTION: Commercial/Same
DESCRIPTION: This is a 2 story, 3 bay, brick structure with a storefront and 1/1 sash at the second story.
DATE: c. 1895
ASSOCIATED BUILDINGS: None
COUNT IN INVENTORY: 1 Contributing

ADDRESS: 126 High Street
HISTORIC NAME: None
HISTORIC/PRESENT FUNCTION: Commercial/Same
DESCRIPTION: This is a 2 story, 4 bay, brick structure with 2 storefronts and 2 separate owners.
DATE: c. 1895
ASSOCIATED BUILDINGS: None
COUNT IN INVENTORY: 2 Contributing

ADDRESS: 128 High Street
HISTORIC NAME: None
HISTORIC/PRESENT FUNCTION: Commercial/Same
DESCRIPTION: This is a 2 story, 2 bay, brick structure with a storefront in a victorian commercial style.
DATE: c. 1895
ASSOCIATED BUILDINGS: None
COUNT IN INVENTORY: 1 Contributing

ADDRESS: 130 High Street
HISTORIC NAME: None
HISTORIC/PRESENT FUNCTION: Commercial/Same
DESCRIPTION: This is a 2 story, 3 bay, brick structure with a storefront in a victorian commercial style.
DATE: c. 1895
ASSOCIATED BUILDINGS: None
COUNT IN INVENTORY: 1 Contributing

ADDRESS: 201 High Street
HISTORIC NAME: Carson & Maxwell Drygoods Store
HISTORIC/PRESENT FUNCTION: Commercial/Same
DESCRIPTION: This is a 3 story, 4 bay, brick structure in an early italianate style.
DATE: c. 1840
ASSOCIATED BUILDINGS: None
COUNT IN INVENTORY: 1 Contributing

ADDRESS: 202-204 High Street
HISTORIC NAME: Himrod Reed Grocery
HISTORIC/PRESENT FUNCTION: Commercial/Same
DESCRIPTION: This is a 3 story, 3 bay, brick structure with a storefront in a victorian commercial style.
DATE: c. 1895
COUNT IN INVENTORY: 1 Contributing

WATERFORD BOROUGH HISTORIC DISTRICT, ERIE COUNTY PAGE 7

ADDRESS: 203-205 High Street
HISTORIC NAME: None
HISTORIC/PRESENT FUNCTION: Commercial/Same
DESCRIPTION: This is a 2 story, 3 bay, brick structure with a
storefront in a vernacular commercial style.
DATE: c. 1840
ASSOCIATED BUILDINGS: None
COUNT IN INVENTORY: 1 Contributing

ADDRESS: 207 High Street
HISTORIC NAME: None
HISTORIC/PRESENT FUNCTION: Commercial/Same
DESCRIPTION: This is a 1 story brick structure in the Federal
Style.
DATE: c. 1865
ASSOCIATED BUILDINGS: None
COUNT IN INVENTORY: 1 Contributing

ADDRESS: 208 High Street
HISTORIC NAME: None
HISTORIC/PRESENT FUNCTION: Commercial/Same
DESCRIPTION: This is a 2 story, 4 bay, brick structure with a
storefront in the Italianate Style.
DATE: c. 1895
ASSOCIATED BUILDINGS: None
COUNT IN INVENTORY: 1 Contributing

ADDRESS: 210 High Street
HISTORIC NAME: None
HISTORIC/PRESENT FUNCTION: Commercial/Same
DESCRIPTION: This is a 2-1/2 story, 3 bay, brick structure with a
storefront in the Italianate Style.
DATE: c. 1895
ASSOCIATED BUILDINGS: None
COUNT IN INVENTORY: 1 Contributing

ADDRESS: 212 High Street
HISTORIC NAME: None
HISTORIC/PRESENT FUNCTION: Commercial/Same
DESCRIPTION: This is a 2-1/2 story, 3 bay, brick structure with a
storefront in the Italianate Style.
DATE: c. 1895
ASSOCIATED BUILDINGS: None
COUNT IN INVENTORY: 1 Contributing

ADDRESS: 213 High Street
HISTORIC NAME: Waterford Hotel
HISTORIC/PRESENT FUNCTION: Commercial/Same
DESCRIPTION: This is a 2-1/2 story brick structure with eclectic detailing and it features a belfry.
DATE: c. 1865
ASSOCIATED BUILDINGS: None
COUNT IN INVENTORY: 1 Contributing

ADDRESS: 216 High Street
HISTORIC NAME: None
HISTORIC/PRESENT FUNCTION: Commercial/Same
DESCRIPTION: This is a 2-1/2 story, 3 bay, brick structure with a storefront in the Italianate Style.
DATE: c. 1895
ASSOCIATED BUILDINGS: None
COUNT IN INVENTORY: 1 Contributing

ADDRESS: 10 West First Street
HISTORIC NAME: None
HISTORIC/PRESENT FUNCTION: Commercial/Residential
DESCRIPTION: This is a 3 story frame structure in a vernacular style.
DATE: c. 1910
ASSOCIATED BUILDINGS: None
COUNT IN INVENTORY: 1 contributing

ADDRESS: 12 East Second Street
HISTORIC NAME: None
HISTORIC/PRESENT FUNCTION: Single Family Residence/Same
DESCRIPTION: This is a 2 story brick structure in the Italianate Style.
DATE: 1872
ASSOCIATED BUILDINGS: None
COUNT IN INVENTORY: 1 Contributing

ADDRESS: 16 West Second Street
HISTORIC NAME: None
HISTORIC/PRESENT FUNCTION: Single Family Residence/Same
DESCRIPTION: This is a 2 story frame structure in a vernacular style.
DATE: c. 1920
ASSOCIATED BUILDINGS: None
COUNT IN INVENTORY: 1 contributing

ADDRESS: 23 West Second Street
HISTORIC NAME: None
HISTORIC/PRESENT FUNCTION: Residential/Rectory
DESCRIPTION: This is a 2 story frame structure in a vernacular style.
DATE: c. 1920
ASSOCIATED BUILDINGS: None
COUNT IN INVENTORY: 1 Contributing

ADDRESS: 28 West Second Street
HISTORIC NAME: None
HISTORIC/PRESENT FUNCTION: Single Family Residence/Same-Laundramat
DESCRIPTION: This is a 2 story frame residential structure in a vernacular style with a laundramat addition to the east.
DATE: c. 1920
ASSOCIATED BUILDINGS: None
COUNT IN INVENTORY: 1 *Non*-contributing

ADDRESS: Walnut and West Second Streets
HISTORIC NAME: Asbury Methodist Church
HISTORIC/PRESENT FUNCTION: Religious/Same
DESCRIPTION: This is a 2 story Federal Style brick church structure with a modest addition at the rear.
DATE: c. 1900
ASSOCIATED BUILDINGS: None
COUNT IN INVENTORY: 1 Contributing

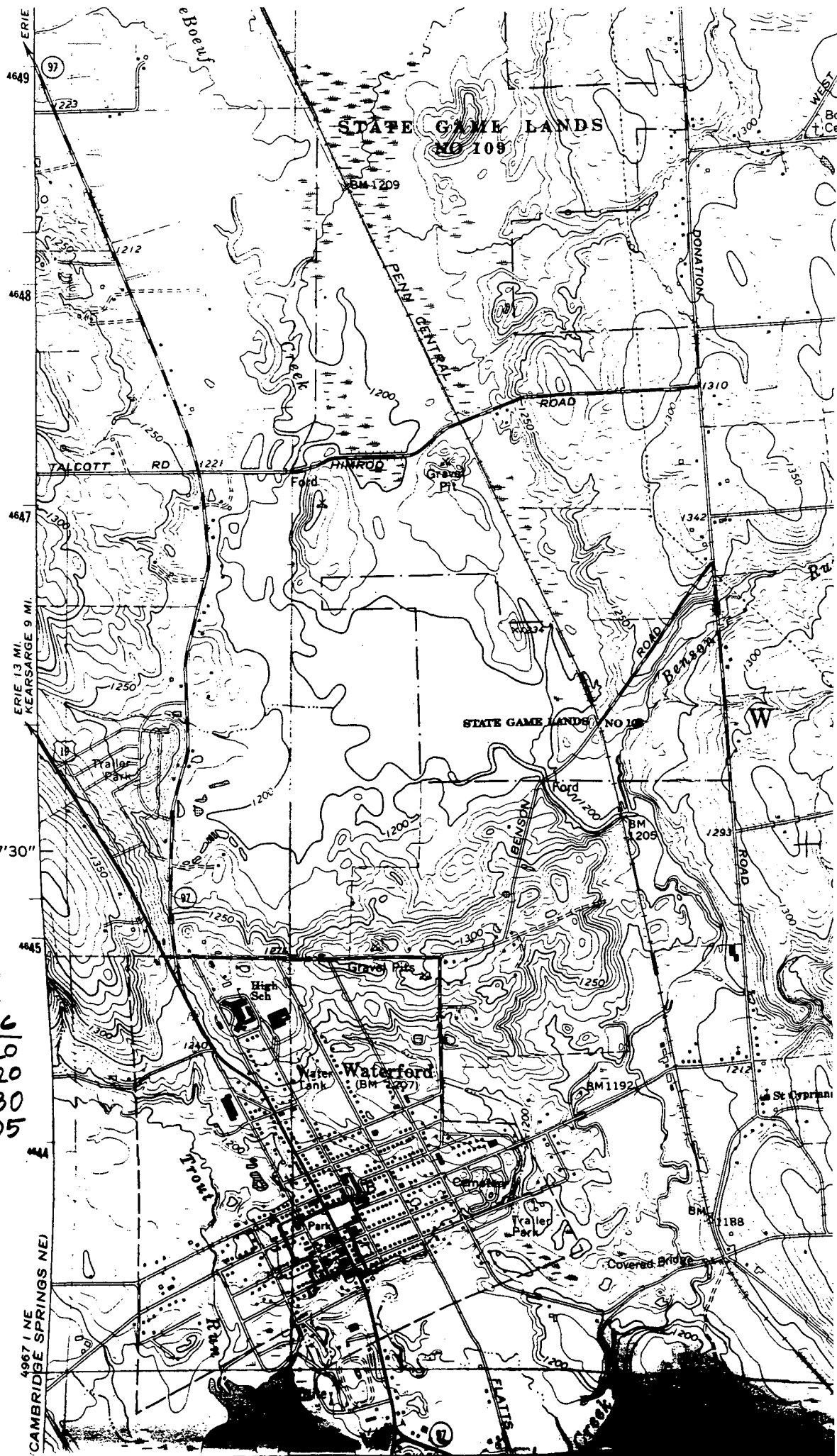
ADDRESS: 101 West Second Street
HISTORIC NAME: None
HISTORIC/PRESENT FUNCTION: Single Family Residence/Same
DESCRIPTION: This is a 2 story, 4 bay, frame structure in a vernacular style.
DATE: c. 1870
ASSOCIATED BUILDINGS: None
COUNT IN INVENTORY: 1 Contributing

ADDRESS: 104 West Second Street
HISTORIC NAME: None
HISTORIC/PRESENT FUNCTION: Single Family Residence/Same
DESCRIPTION: This is a 2 story frame structure in a vernacular style. It has been covered with aluminum siding.
DATE: c. 1870
ASSOCIATED BUILDINGS: None
COUNT IN INVENTORY: 1 Contributing

ADDRESS: 126 West Second Street
HISTORIC NAME: None
HISTORIC/PRESENT FUNCTION: Single Family Residence/Same
DESCRIPTION: This is a 1 story frame structure.
DATE: c. 1950
ASSOCIATED BUILDINGS: None
COUNT IN INVENTORY: 1 Non-contributing

ADDRESS: 134 West Second Street
HISTORIC NAME: Dr. Wm. Faulkner
HISTORIC/PRESENT FUNCTION: Single Family Residence/Same
DESCRIPTION: This is a 2 story frame structure in the Federal
Style. The center bay features a bay window and 1 story
wings flank the 2 story structure.
DATE: c. 1860
ASSOCIATED BUILDINGS: None
COUNT IN INVENTORY: 1 Contributing

ADDRESS: Waterford Park
HISTORIC NAME: Bandstand
HISTORIC/PRESENT FUNCTION: Bandstand
DESCRIPTION: one story, frame, octagonal, open-sided bandstand
DATE: post-1939
ASSOCIATED BUILDINGS: none
COUNT IN INVENTORY: 1 non-contributing building



WATERFORD BOROUGH
HISTORIC DISTRICT
ERIE COUNTY
Waterford Quad

NORTHING	EASTING
4643.630	583.920
4643.790	584.320
4643.420	584.330
4643.360	584.105